



SPLIT-TYPE AIR CONDITIONERS

Changes for the Better

Mitsubishi
Electric
EQ quality

R-M FRIGO Rijeka
prodaja - montaža - ugradnja instalacije - servis

091 793 4075

rmfrigo@yahoo.com

Wrap Yourself in Comfort and Quiet
Eco-conscious Technologies from Japan

Full Product Line Catalogue
2016
TENTATIVE

for a greener tomorrow



MSZ-D SERIES

Compact, high-performance indoor and outdoor units and advanced inverter technologies provide superior energy savings and comfort in all rooms.

MSZ-DM25/35VA



Stylish Design with Flat Panel Front

A stylish flat panel design is employed for the front of the indoor unit. The simple look matches room aesthetics.



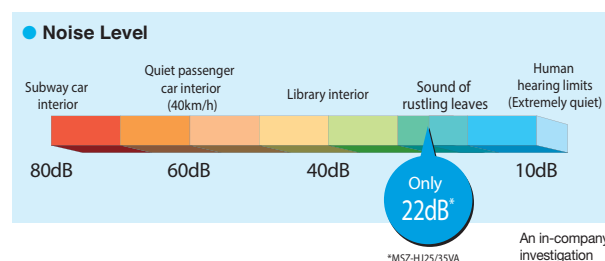
Advanced Inverter Control – Efficient Operation All the Time



Mitsubishi Electric's cutting-edge inverter technologies are adopted to provide automatic adjustment of operation load according to need. This reduces excessive consumption of electricity, and thereby realises an Energy Rank "A+" rating for both 25 and 35 classes.

Silent Operation

Quiet, relaxing space is within reach. Operational noise is a low 22dB (25/35 classes). Operation is so silent you might even forget the air conditioner is on.



Wide operating range

In order to satisfy a larger type of applications, operating range in cooling mode is possible until -10 °C of outdoor temperature.

Operating Range (Cooling)

MUZ-DM | -10°C | +46°C

Multi-functional connectors added

Thanks to built-in multi-functional connectors, MSZ-DM series can be connected to several accessories. This allows unit control through wired remote controller, M-net connection and MELCloud compatibility.

Compact Units

The widths of both indoor and outdoor units are compact, making installation in smaller, tighter spaces possible.

Indoor Unit: MSZ-DM25/35VA



Only 799mm width

Outdoor Unit: MUZ-DM25/35VA



Only 699mm width

MSZ-D SERIES



Indoor Unit



MSZ-DM25/35VA

Outdoor Unit



MUZ-DM25/35VA

Remote Controller



Type				Inverter Heat Pump	
Indoor Unit				MSZ-DM25VA	MSZ-DM35VA
Outdoor Unit				MUZ-DM25VA	MUZ-DM35VA
Refrigerant				R410A ⁽¹⁾	
Power Source				Indoor Power supply	
Supply Outdoor (V / Phase / Hz)				230V/Single/50Hz	
Cooling	Design load		kW	2.5	3.1
	Annual electricity consumption ⁽²⁾		kWh/a	151	193
	SEER ⁽⁴⁾			5.8	5.7
	Energy efficiency class			A+	A+
	Capacity	Rated	kW	2.5	3.15
		Min-Max	kW	1.3 - 3.0	1.4 - 3.5
Heating (Average Season) ⁽³⁾	Total Input		Rated kW	0.730	1.040
	Design load		kW	1.9 (-10°C)	2.4 (-10°C)
	Declared Capacity	at reference design temperature	kW	1.9 (-10°C)	2.4 (-10°C)
		at bivalent temperature	kW	1.9 (-10°C)	2.4 (-10°C)
		at operation limit temperature	kW	1.9 (-10°C)	2.4 (-10°C)
		Back up heating capacity	kW	0.0 (-10°C)	0.0 (-10°C)
	Annual electricity consumption ⁽²⁾		kWh/a	649	781
	SCOP ⁽⁴⁾			4.1	4.5
	Energy efficiency class			A+	A+
	Capacity	Rated	kW	3.15	3.6
		Min-Max	kW	0.9 - 3.5	1.1 - 4.1
Total Input		Rated kW	0.870	0.995	
Operating Current (Max)			A	5.8	6.5
Indoor Unit	Input		Rated kW	NA	NA
	Operating Current(Max)		A	NA	NA
	Dimensions		H*W*D mm	290-799-232	290-799-232
	Weight		kg	9	9
	Air Volume (SLo-Lo-Mid-Hi-SHi ⁽⁵⁾ (Dry/Wet))	Cooling	m³/min	3.8 - 5.5 - 7.3 - 9.5	3.8 - 5.7 - 7.8 - 10.9
		Heating	m³/min	3.5 - 5.5 - 7.5 - 10.0	3.5 - 5.5 - 7.5 - 10.3
	Sound Level (SPL) (SLo-Lo-Mid-Hi-SHi ⁽⁵⁾)	Cooling	dB(A)	22 - 30 - 37 - 43	22 - 31 - 38 - 45
		Heating	dB(A)	23 - 30 - 37 - 43	23 - 30 - 37 - 44
Outdoor Unit	Sound Level (PWL)		Cooling dB(A)	57	60
	Dimensions		H*W*D mm	538-699-249	538-699-249
	Weight		kg	24	25
	Air Volume	Cooling	m³/min	31.5	31.5
		Heating	m³/min	31.5	31.5
	Sound Level (SPL)	Cooling	dB(A)	50	51
		Heating	dB(A)	50	51
	Sound Level (PWL)	Cooling	dB(A)	63	64
		Operating Current (Max)		A	5.8
	Breaker Size		A	10	10
Ext. Piping	Diameter	Liquid/Gas mm	6.35/9.52	6.35/9.52	
	Max.Length	Out-In m	20	20	
	Max.Height	Out-In m	12	12	
Guaranteed Operating Range (Outdoor)		Cooling	°C	-10 ~ +46	-10 ~ +46
		Heating	°C	-10 ~ +24	-10 ~ +24

(*)1) Refrigerant leakage contributes to climate change. Refrigerant with lower global warming potential (GWP) would contribute less to global warming than a refrigerant with higher GWP, if leaked to the atmosphere. This appliance contains a refrigerant fluid with a GWP equal to 1975. This means that if 1 kg of this refrigerant fluid would be leaked to the atmosphere, the impact on global warming would be 1975 times higher than 1 kg of CO₂ over a period of 100 years. Never try to interfere with the refrigerant circuit yourself or disassemble the product yourself and always ask a professional.

(*)2) Energy consumption based on standard test results. Actual energy consumption will depend on how the appliance is used and where it is located.

(*)3) SHi: Super High

(*)4) SEER, SCOP and other related description are based on COMMISSION DELEGATED REGULATION (EU) No.626/2011. The temperature conditions for calculating SCOP are based on "Average Season".

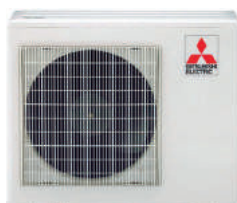
(*)5) Please see page 47 for heating (warmer season) specifications.

MXZ-DM SERIES

Multi-port outdoor units exclusively for MSZ-HJ and MSZ-DM indoor units.



2-port
MXZ-2DM40VA



3-port
MXZ-3DM50VA

Stylish Design with Flat Panel Front

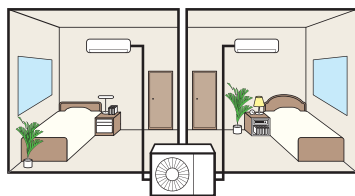
A stylish flat panel design is employed for the front of the indoor unit. The simple look matches room aesthetics.



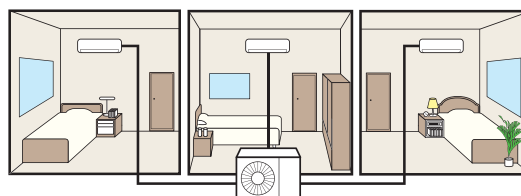
Easy to create various combinations

Wide range of simple combinations only possible using multi-port outdoor units.

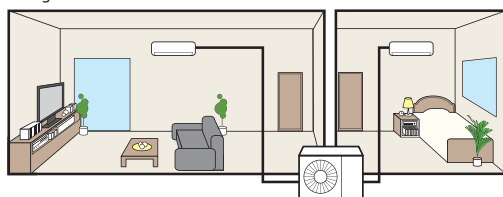
Two bedrooms



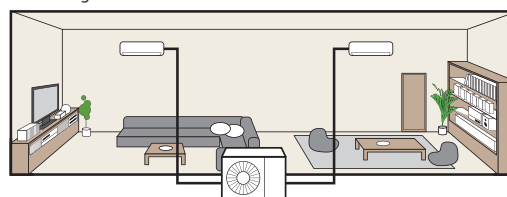
Three bedrooms



Living room and one bedroom



Wide living room



Attention

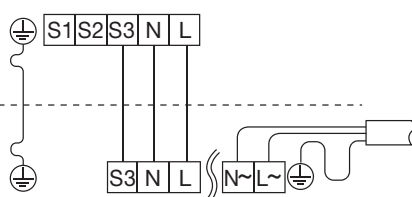
MXZ-DM is exclusively for connection to MSZ-HJ and MSZ-DM. Please check to make sure that wiring is done correctly.

For MXZ-DM

MSZ-DM

MXZ-2DM

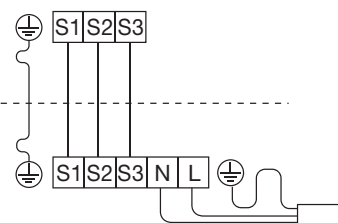
MXZ-3DM



For other MXZ models

MSZ

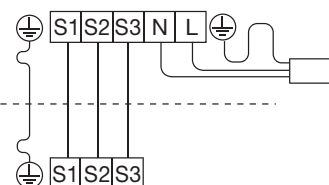
MXZ



For MSZ-DM/MUZ-DM

MSZ-DM

MUZ-DM



MXZ-DM SERIES

INVERTER MULTI



Type (Inverter Multi - Split Heat Pump)				Up to 2 Indoor Units	Up to 3 Indoor Units
Indoor Unit				Please refer to (*4)	
Outdoor Unit				MXZ-2DM40VA	MXZ-3DM50VA
Refrigerant				R410A*	
Power Supply				Outdoor power supply	
Outdoor (V/Phase/Hz)				230 / Single / 50	
Cooling	Capacity	Rated	kW	4.0	5.0
	Input**	Rated	kW	1.05	1.13
	EER**			3.81	4.42
		EEL Rank**		A	A
	Design Load		kW	4.0	5.0
	Annual Electricity Consumption**		kWh/a	226	283
	SEER**			6.1	6.1
		Energy Efficiency Class**		A++	A++
	Capacity	Rated	kW	4.3	6.0
	Input	Rated	kW	1.16	1.31
Heating (Average Season)	COP**			3.71	4.58
		EEL Rank**		A	A
	Design Load		kW	3.2	4.0
	Declared Capacity	at reference design temperature	kW	2.73	3.34
		at bivalent temperature	kW	3.01	3.73
		at operation limit temperature	kW	2.27	2.70
	Back Up Heating Capacity		kW	0.47	0.66
	Annual Electricity Consumption**		kWh/a	1105	1455
	SCOP**			4.0	3.8
		Energy Efficiency Class**		A+	A
Operating Current (max)				12.2	18.0
Outdoor Unit	Dimensions	H x W x D	mm	550 - 800 (+69) - 285 (+59.5)	710 - 840 (+30) - 330 (+66)
	Weight		kg	32	57
	Air Volume	Cooling	m ³ /min	29.2	37.5
		Heating	m ³ /min	27.7	39.6
	Sound Level (SPL)	Cooling	dB(A)	48	50
		Heating	dB(A)	52	53
	Sound Level (PWL)	Cooling	dB(A)	63	64
	Operating Current	Cooling	A	5.1	5.0
		Heating	A	5.6	5.8
	Breaker Size		A	15	25
Ext. Piping	Port Diameter	Liquid / Gas	mm	6.35 x 2 / 9.52 x 2	6.35 x 3 / 9.52 x 3
	Total Piping Length (max)		m	30	50
	Each Indoor Unit Piping Length (max)		m	20	25
	Max. Height		m	15 (10)*3	15 (10)*3
	Chargeless Length		m	20	40
Guaranteed Operating Range [Outdoor]				-10 ~ +46	
				-15 ~ +24	

*1 Refrigerant leakage contributes to climate change. Refrigerant with lower global warming potential (GWP) would contribute less to global warming than a refrigerant with higher GWP, if leaked to the atmosphere. This appliance contains a refrigerant fluid with a GWP equal to 1975. This means that if 1 kg of this refrigerant fluid would be leaked to the atmosphere, the impact on global warming would be 1975 times higher than 1 kg of CO₂ over a period of 100 years. Never try to interfere with the refrigerant circuit yourself or disassemble the product yourself and always ask a professional.

*2 Energy consumption based on standard test results. Actual energy consumption will depend on how the appliance is used and where it is located.

*3 If the outdoor unit is installed higher than the indoor unit, max height is reduced to 10m.

*4 EER/COP, EEL rank, SEER/SCOP values and energy efficiency class are measured when connected to the indoor units listed below.

MXZ-2DM40VA MSZ-DM25VA + MSZ-DM25VA

MXZ-3DM50VA MSZ-DM25VA + MSZ-DM25VA + MSZ-DM25VA

KLIMA UREĐAJI

091-793 4075